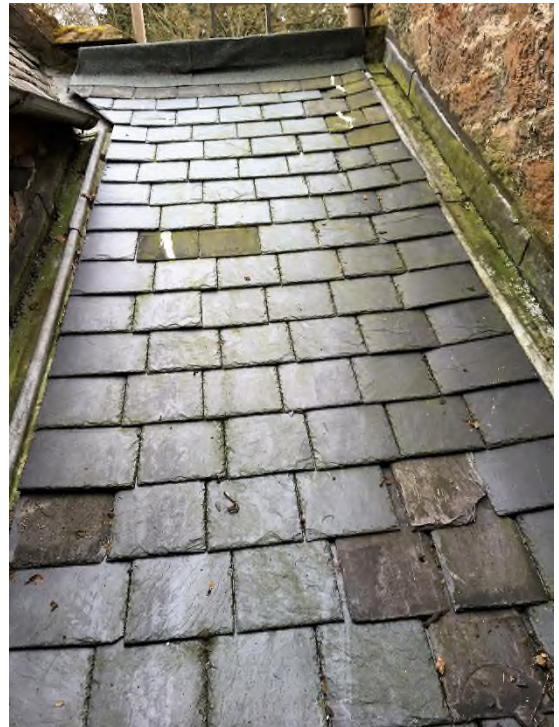


The Section of roof on this building had been poorly slated and the work carried out with inferior materials, poor quality slates and finishing's. The slates used were not of sufficient length or width to provide suitable water proofing to the roof.

The mismatched slates resulted in water ingress during heavy rain.



The roof was stripped of existing coverings and reinstated with new lead flashings, The original flashing had been left in place but had passed their natural useful life These were reinstated using code 5 lead as per LSA guidelines



The roof was re-slatted using slates of sufficient size to suit the pitch of roof